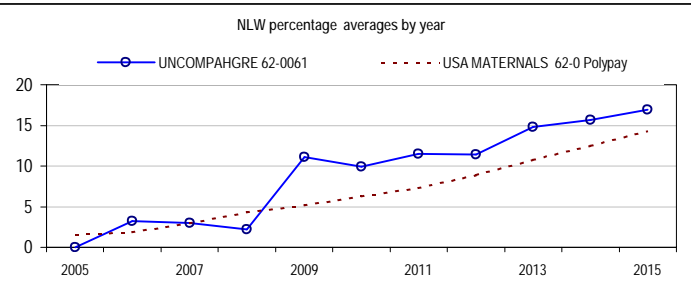
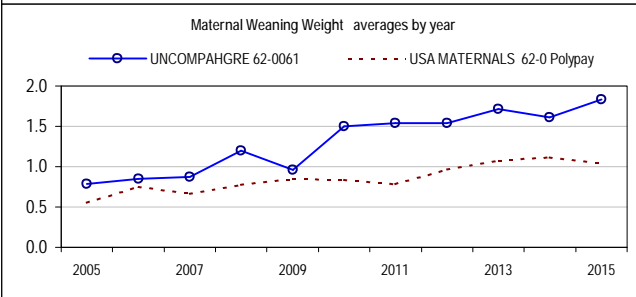
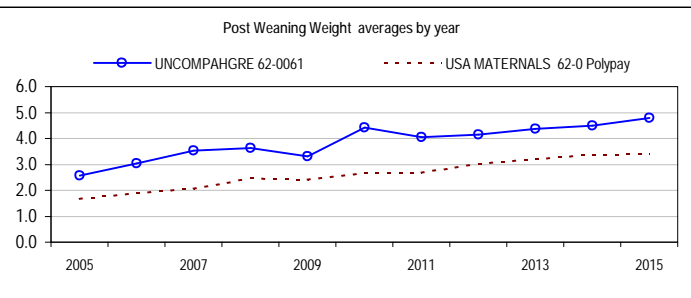
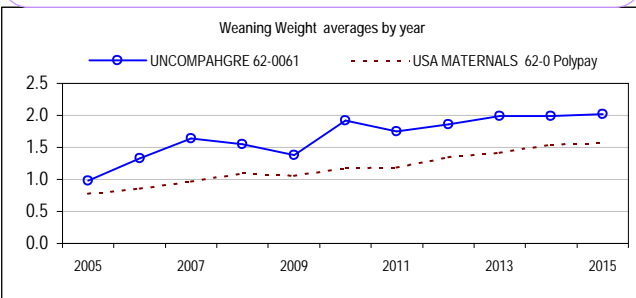
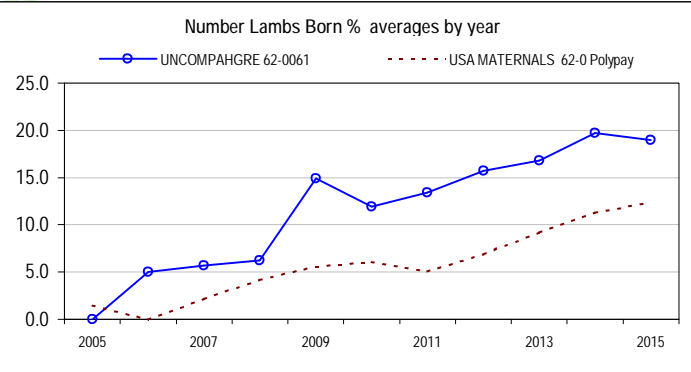
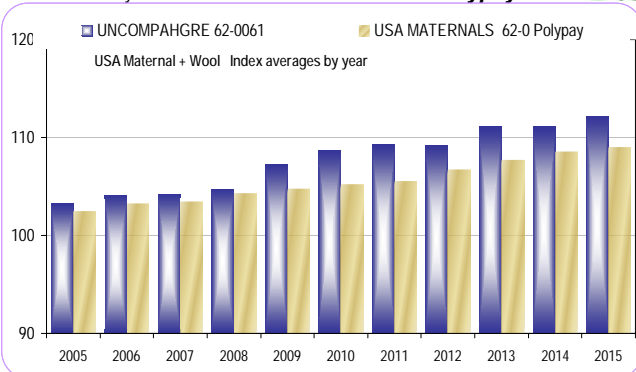


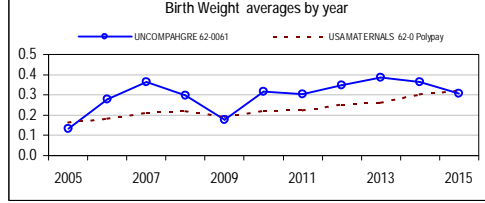


Analysis : **USA MATERNALS 62-0 Polypay**

Dated : 1-Jul-16



USA MATERNALS 62-0 Polypay							Maternal + Wool	
	MWwt	Wwt	Pwwt	PEMD	NLB%	NLW%		Counts
2006	0.75	0.87	1.90	0.00	0.0	1.9	103.3	2090
2007	0.67	0.97	2.08	0.00	2.2	3.0	103.5	2494
2008	0.78	1.11	2.47	0.00	4.2	4.3	104.3	2439
2009	0.85	1.06	2.43	0.00	5.6	5.2	104.8	2148
2010	0.84	1.18	2.67	0.00	6.1	6.3	105.3	1976
2011	0.79	1.19	2.69	0.00	5.1	7.3	105.6	2358
2012	0.97	1.35	3.04	0.00	6.9	8.9	106.7	2409
2013	1.08	1.42	3.22	0.00	9.2	10.8	107.7	2783
2014	1.12	1.55	3.39	0.00	11.3	12.5	108.5	2498
2015	1.05	1.57	3.42	0.00	12.4	14.3	109.1	2891



UNCOMPAHGRE 62-0061							Maternal + Wool	
	MWwt	Wwt	Pwwt	PEMD	NLB%	NLW%		Counts
2006	0.85	1.33	3.03		5.0	3.2	104.1	118
2007	0.87	1.64	3.53		5.7	3.0	104.3	171
2008	1.20	1.56	3.63		6.2	2.2	104.8	65
2009	0.96	1.38	3.30		14.9	11.1	107.3	89
2010	1.50	1.92	4.41		11.9	9.9	108.7	67
2011	1.54	1.75	4.04		13.4	11.5	109.3	155
2012	1.54	1.86	4.15		15.7	11.4	109.2	96
2013	1.72	1.99	4.36		16.8	14.8	111.1	86
2014	1.61	1.99	4.50		19.7	15.7	111.1	116
2015	1.84	2.02	4.79		19.0	16.9	112.2	106

LAMBPLAN reports are prepared using data supplied by breeders and/or accredited operators. LAMBPLAN cannot guarantee the accuracy of this data. LAMBPLAN ASBVs are designed to estimate genetic merit of animals from the data supplied. The reports are provided to assist breeders but no liability is accepted for the outcome resulting from the use of this information.

Linkage Summary	
UNCOMPAHGRE 62-0061	linked
Wts	Yes
Carcase	No
FEC	No
Reproduction	Yes
Site Code	620061

3-Jul-2016
www.sheepgenetics.org.au